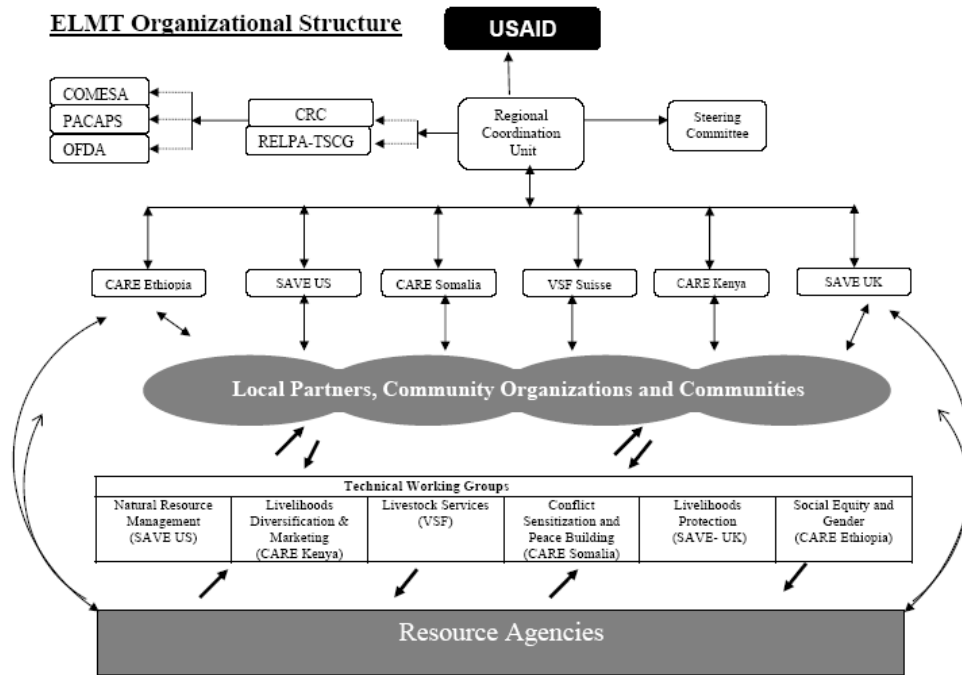


ELMT Coordination



Management Structure

The Consortium management structure as illustrated above is comprised of a **Regional Coordination Unit**, responsible for project oversight and guidance and sub grant management, the **Consortium members** who will oversee implementation of activities and are jointly responsible for the achievement of program objectives and the **Technical Working Groups** comprised of thematic specialists responsible for the quality of the program in technical areas.

Regional Coordination Unit

The Regional Co-ordination Unit (RCU) housed at CARE Somalia will administer and coordinate ELMT, as well as to ensure program quality, facilitate regional-level networking, and promote shared-learning throughout the ELMT Consortium.

The **Chief of Party (CoP)** will supervise project implementation, and play a key role in promoting coordination within the Consortium, donor and government liaison, participation in regional coordinating committees, and strategic leadership in the promotion of sustainable pastoral livelihoods.

The **Deputy Chief of Party (DCoP)** will provide day to day support for project operations including financial and reporting oversight, ensures consistency of implementation, strategies and approaches and maintains technical co-ordination. The DCoP will maintain essential backstopping services to the CoP as required.

The **Learning, Monitoring, and Evaluation Advisor (LME)** will be responsible for the coordination, implementation, maintenance and functioning of effective design, monitoring and evaluation systems in line with priorities identified in the ELMT project. The LME advisor plays a key role in developing monitoring frameworks and reporting formats and promoting and sharing of learning. The LME Advisor will be the key focal point for information dissemination about the program.

As a central focus for communication, the RCU will be the sole interlocutor with USAID Regional office, responsible for project coordination, timely reporting, and facilitating project involvement of all stakeholders. The RCU will lead the coordination of ELMT activities with PACAPS, COMESA, and CAADP and other regional pastoralist programs at a regional level. The CoP will represent ELMT on the Core Regional Committee on Pastoralism and Rural Development (CRC) and the RELPA Technical Steering and Coordination Group (TSCG).

The USAID Country Missions may have direct contact with the relevant consortium members on country specific issues as long as the RCU is fully informed. PACAPS may also liaise directly with Consortium members as long as it is agreed with the RCU.

The RCU will act as a repository for all financial expenditure reports from the Consortium members and will be involved in the review and reconciliation of all reports to ensure that all grant expenditures are in accordance with USAID grant management regulations. The Unit will provide guidance on sub-grant management for the sub-grantees and lead specific activities through resource agencies.

Consortium Members

Each Consortium member will carry out on the ground activities in particularly countries:

- CARE Ethiopia – Ethiopia
- CARE Somalia – Somalia
- CARE Kenya – Kenya
- Save the Children-US – Ethiopia
- Save the Children-UK – Regional
- VSF Suisse – Kenya and Somalia

The Consortium members will meet semi-annually to co-ordinate activities and review progress in relation to the program objectives and to ensure cross cutting themes are addressed in all aspects of the program. Regular meetings will also take place with RCU and between Consortium members to deal with specific issues. The principles and shared values of the Consortium members in relation to the functioning of this project will be contained in a Consortium agreement. Technical information will be disseminated by the technical advisors or if general through the monthly RCU technical bulletin. Partners and consortium experiences will be disseminated through a six monthly technical newsletter.

Subgrantees

Each Consortium members will have an average of five subgrantees or local partners selected for their geographical and technical expertise to implement particular aspects of the program. They will also incorporate relevant cross cutting issues into their

activities and will participate in the technical working groups and ELMT trainings and workshops.

Technical Working Groups

Each Consortium member will take the lead in one technical area which is aligned with the six Intermediate Results and appoint a Technical Advisor (in consultation with the RCU). The proposed distribution among Consortium members reflects their specific technical skill sets and experience as follows:

Technical Working Group	Livestock Services	Livelihood Protection	NRM	Social and Gender Equity	Conflict Sensitivity and Peacebuilding	Livelihoods Diversification and Marketing
Technical Advisor	Dr Seifu Maloo	Mohamed Abdinoor	Fiona Flintan	Ummulkhum Dubow	Ali Hersi	Ashif Manji
Consortium Member	VSF	SC/UK	SC/US	CARE Ethiopia	CARE Somalia	CARE Kenya

The advisors will provide coordination and leadership to other Consortium members in their assigned area and will each chair a Technical Working Group which will provide virtual fora for information sharing and technical support at the organizational level to the Consortium members, resource agencies and local partners and community-based organizations. While the vertical linkages of such a structure are a standard form of interaction, the project is seeking to weave horizontal and lateral linkages into programming as well. The Deputy Chief of Party will ensure the various technical working groups work together on cross cutting issues.

RELPA Partners and other agencies

It will be the responsibility of the Regional Coordination Unit, to liaise with the RELPA partners and related technical agencies and programs in the Horn of Africa. Regular meetings will be organised with PACAPS and USAID as well as the quarterly RELPA Technical Steering and Coordination Group meetings. Where appropriate, the Regional Coordination Unit will also delegate Technical Advisors from the relevant Technical Working Groups, or other key staff, to attend meetings or liaise with the appropriate agency/program staff.

Project Steering Committee

If necessary the Head of the lead Consortium Member could convene the Heads of other Consortium members to address concerns about the achievement of program objectives. The Regional Coordination Unit will act as Secretariat to the Committee ensuring that all decisions are followed through and executed.